

What is EPAT®?

Extracorporeal Pulse Activation Treatment (EPAT®) is the most advanced and highly effective non-invasive treatment method approved by the FDA. This proprietary technology is based on a unique set of pressure waves that stimulate the metabolism, enhance blood circulation and accelerate the healing process. Damaged tissue gradually regenerates and eventually heals.

This non-invasive office/clinic based procedure represents a breakthrough treatment option for a broad range of musculoskeletal conditions.

What disorders can be treated?

Generally, acute or chronic muscle pain and/or tendon insertional pain that significantly impairs mobility or quality of life including:

- Neck
- Shoulder
- Back and chest
- Upper extremity
- Lower extremity
- Foot and ankle
- Myofascial trigger points

What are the possible side effects/complications?

The non-invasive EPAT® treatment has virtually no risks or side effects. In some cases patients may experience some minor discomfort which may continue for a few days. It is normal to have some residual pain after intense exercise or a full-day of work.

Elective Payment and Insurance

Insurance does not cover the EPAT® procedure however, the Elective Payment option allows you to have all the benefits of an EPAT® procedure at a very affordable price. Often there can be a significant savings to you through the Elective Payment option as compared to paying deductibles, multiple co-pays, and other non-insurance covered expenses as you attempt several months of conservative treatments, surgery, post-operative surgical care and rehabilitation. This non-invasive option will be particularly appealing to those patients who are eager return to work or normal activities in only a few days with just as good if not better clinical results compared to traditional treatment methods including surgery.

How much does it cost?

For most patients, the Elective Payment out-of-pocket costs are much less than you would expect. Your physician can provide a personalized pricing program. Some patients can use their employer's "Flexible Payment Medical Savings Account" to cover these out-of-pocket expenses with pre-tax dollars.

Robert G. Parker, DPM, FACFAS
14441 Memorial Drive, Ste. 16
Houston, TX 77079
281-497-2660 www.parkerpodiatry.com

How can I get more information?

Your doctor is the best person to talk with if you have questions or concerns about the EPAT® procedure. He or she has extensive knowledge and specialized training on all aspects of its use, safety and effectiveness.

You can also learn more about EPAT® technology and product line by visiting the CuraMedix website at www.curamedix.com.



500 EAST WASHINGTON STREET, SUITE 34
NORTH ATTLEBORO, MA 02760

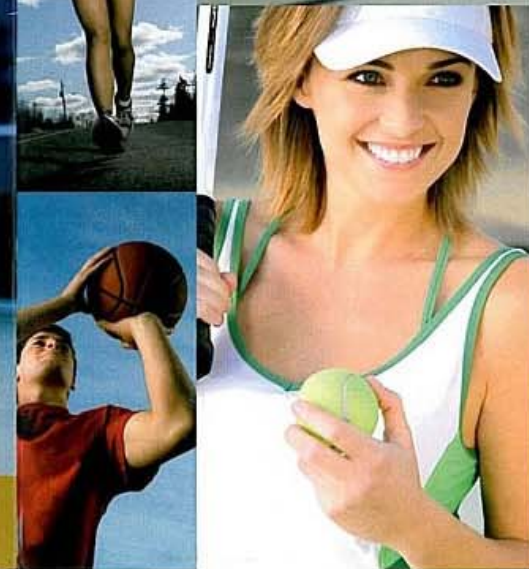
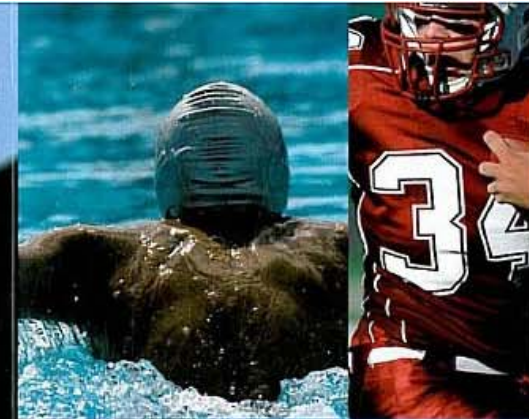
TEL 877 699 8399 | FAX 508 699 8499
INFO@CURAMEDIX.COM | WWW.CURAMEDIX.COM

Stay in Motion

Don't Let Muscle & Tendon Pain Slow You Down



EPAT®
THE MOST ADVANCED NON-INVASIVE
TREATMENT FOR MUSCULOSKELETAL PAIN



What are the expected results?

The beneficial effects of Extracorporeal Pulse Activation Treatment (EPAT®) are often experienced after only 3 treatments. Some patients report immediate pain relief after the treatment, although it can take up to four weeks for pain relief to begin. The procedure eliminates pain and restores full mobility, thus improving your quality of life. Over 80% of patients treated report to be pain free and/or have significant pain reduction.

Is it safe?

Yes. This FDA approved technology was developed in Europe and is currently used around the globe. A wealth of medical experience, state-of-the-art engineering and optimal quality have been built into each EPAT® device, and extensive clinical studies and tests have confirmed its safety and efficacy.

If performed by a qualified caregiver Extracorporeal Pulse Activation Treatment (EPAT®) has virtually no risks or side effects.



What if I have a special health condition?

The safety and effectiveness of the EPAT® procedure has not been determined on people with the following health conditions. Your doctor will provide you with information about how these and other conditions might affect the determination to perform the EPAT® procedures.

- Malignancies
- DVT (Deep Vein Thrombosis)

How is the treatment performed?

Coupling gel is applied to the treatment area of interest to enhance effectiveness. After these preparations, EPAT® pressure waves are released via the applicator moved over the area of interest in a circular motion.

What is the duration of the treatment and how many treatments will I need?

Treatment sessions take approximately 15 minutes depending on the disorder to be treated. Generally, 3 treatment sessions are necessary at weekly intervals.

What will happen after the treatment/procedure?

You will receive post-treatment instructions from your physician to follow during your recovery.



Why Consider Non-Invasive EPAT®?

EPAT® has a proven success rate that is equal to or greater than that of traditional treatment methods (including surgery) and without the risks, complications and lengthy recovery time. EPAT® is performed in your physician's office/clinic, does not require anesthesia, requires a minimal amount of time, patients can bear weight (i.e. walk) immediately, and return to normal activity within a few days of the procedure.

Benefits of Non-Invasive EPAT®

- Patients are immediately fully weight bearing.
- Bilateral patients can be treated at the same time.
- No incision—No risk of infection at the treatment site—No scar tissue formation.
- Patients are able to return to work/normal activities within 24-48 hours, resuming strenuous activities after 4 weeks.
- Patients evaluated for success at 12 weeks.
- Over 80% successful outcomes [Published Data—Long-term pain relief (Results retained)].
- Non-invasive so biomechanics are not affected—future treatment options are not limited.
- Cost Effective.
- Reduced conservative care—ends the cycle—Reduced after care and complications costs.
- Reduced cost from lost work.
- Fast, safe and effective.

